

[View this email in your browser](#)



December 2019

Research Highlights

Graduate employment and postgraduate study outcomes for care-experienced students

What happens after graduation? Neil Harrison presents emerging findings from one strand of this project using national data from the Higher Education Stats Agency.

[Read more](#)

Born Into Care: Towards inclusive guidelines when the State intervenes at birth

Ellie Ott and Harriet Ward will work in partnership with Karen Broadhurst and Claire Mason at Lancaster University on a new project to develop guidelines for health and social work professionals. The project is being carried out as the first public law Special Interest Project for the Nuffield Family Justice Observatory.

[Read more](#)

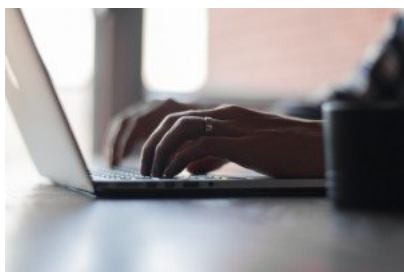
Use of children's social care data at the local and regional area level

Lisa Holmes explores the nature, availability and use of child level data at local and regional level in children's social care departments in this insight piece.

[Read more](#)

The article above was published to co-incide with a data roundtable in October hosted by the Rees Centre, University of Lancaster and the Nuffield Family Justice Observatory with representatives from DfE, Ofsted, ONS, Office of the Children's Commissioner, local authority performance managers and academics.

Latest Rees Centre Blog Posts



The first three posts below are from our continuing series on data..

Data in the right format

By Jean Mallo, Performance Manager, Children's Services Performance Team, Wandsworth Borough Council and co-chair of LIEG (London Information Exchange Group).

[Read more](#)

Exploring the complexities of children's social care data

Emily Buehler from the Rees Centre looks at the analysis of aggregate administrative data using practical examples.

[Read more](#)

Using data tools in local authority children's services

by Alastair Lee, Children's Services Data and Information Manager, East Sussex County Council and Chair of the Children's Services National Performance and Information Management Group.

[Read more](#)

Learning to Care

Sam Turner, Become's policy manager, looks at what the government can do to better support the educational needs of care-experienced children and young people.

[Read more](#)

The Care Leaver Local Offer

Sarah Wilkinson, National Leaving Care Benchmarking Forum, highlights the toolkit and key findings from a recent NLCBF report to help local authorities review and improve their local offer for care leavers.

[Read more](#)

Highlighted Podcasts

School Exclusions - Rees Centre Inaugural Annual Lecture 7 Nov 2019

Annual Lecture 2019

School Exclusions

Harry Daniels, Alison Woodhead, Lisa Cherry

Chair: Rees Centre Director Lisa Holmes

Our speakers, Harry Daniels, Alison Woodhead and Lisa Cherry, gave thought provoking presentations looking at the exclusions picture across England, Scotland, Wales and Northern Ireland, issues and implications for adopted children who are excluded and the

impact of exclusion on education and employment for young people who left care in the 70s and 80s.

Watch Now

Building Resilience for Young People in your School - webinar 3 Dec 2019



Richard Parker and Tony Clifford, founder trustees of ARC (Attachment Research Community) joined Michelle Johnson, Oxfordshire's Virtual School Head and Neil Harrison, Director of the Alex Timpson Attachment and Trauma Programme in Schools. ARC's aim is to make all schools attachment and trauma aware by 2025.

Watch now

International Therapeutic Residential Care Conference and Work Group Meeting

The future of residential care in child protection: addressing therapeutic needs, quality and best practices in international perspective.

Co-convened by our Director Lisa Holmes (with Jorge Del Valle and Jim Whittaker) in October. [Copies of conference papers and presentations](#)

Children's Social Care Data User Group

Interested in the use of children's social care administrative data?

The group will shortly circulate a December newsletter. If you would like to join the group's mailing list, please email the [Rees Centre](#).

Updates include a forthcoming website, details of the annual meeting (Weds 1 April 11-4pm in London) and summaries of research and projects being carried out by members in this field. The response to the group from the DfE and ONS around issues of data access is also included.

More info: j.woodman@ucl.ac.uk

In The Media

[Using algorithms in children's social care, experts call for better understanding of risks and benefits](#)

Community Care, 29/10/19

Lisa Holmes comments on the use of algorithms in children's services.

Team News



Welcome to new research officers Ellie Suh and Emily Buehler and to Yusuf Khalifa Aleghfeli, new doctoral student supervised by Ellie Ott and Leon Feinstein.

More info: [Rees Centre Team](#)

Upcoming Events



Public Seminar 4 May 2020

[Measuring vulnerability amongst children in England. A new national approach](#)

Leon Feinstein, Professor of Education and Social Care



Copyright © 2019 Rees Centre Department of Education University of Oxford, All rights reserved.

Want to change how you receive these emails?
You can [update your preferences](#) or [unsubscribe from this list](#).

